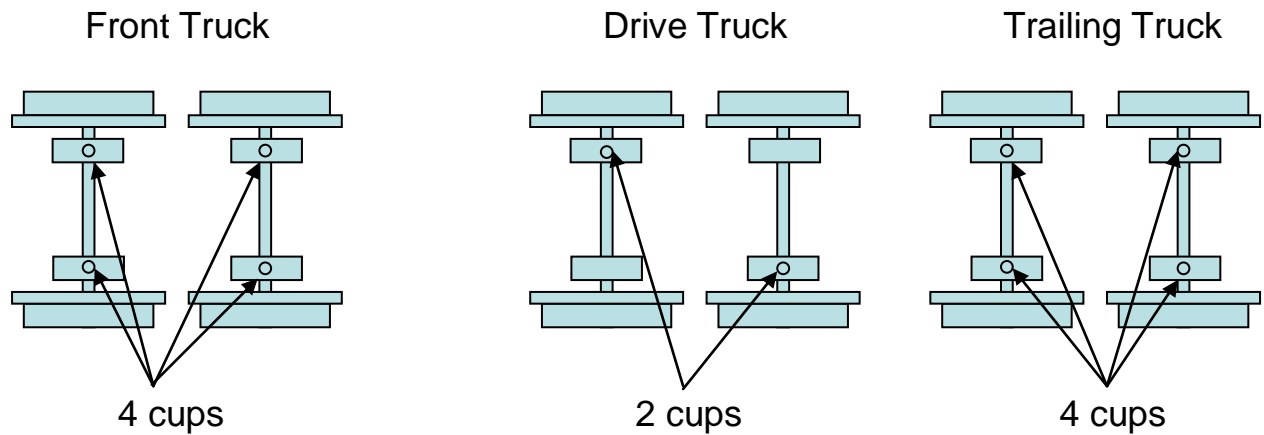


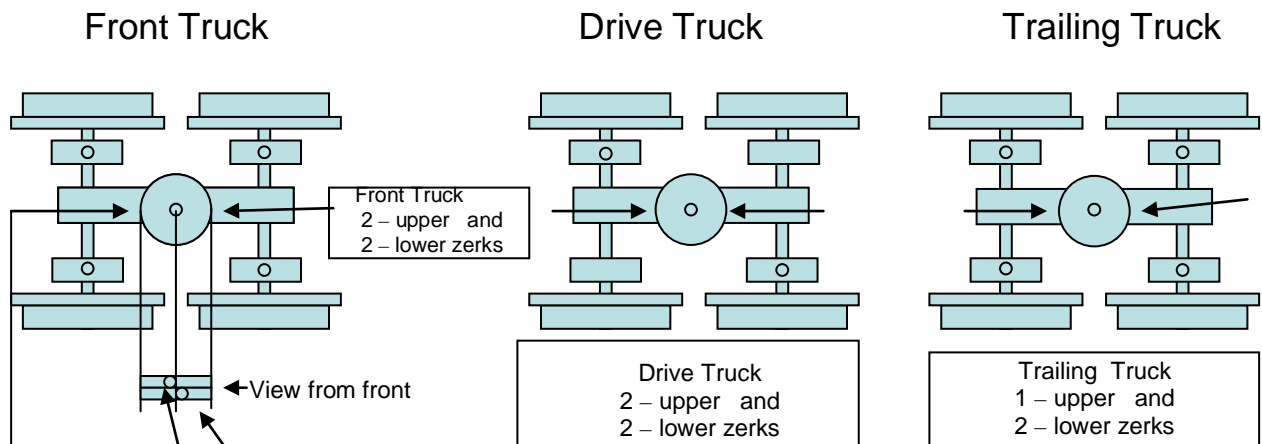
Galloping Goose #5 Lubrication Guide

ver. 3.0 - 2/20/2015 rev.10-06-2018 az jb



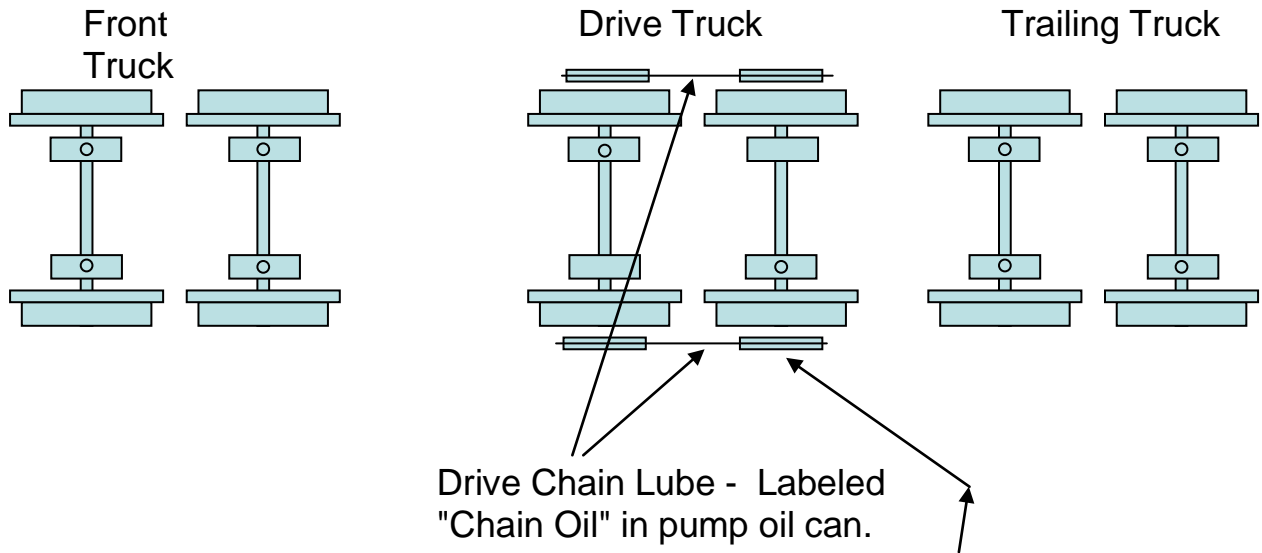
The drive truck has just one oil cup per axel. These Cups have been replaced by grease zerk fittings. 2017

Oil Cups on Bearings Journal Oil (D&S)

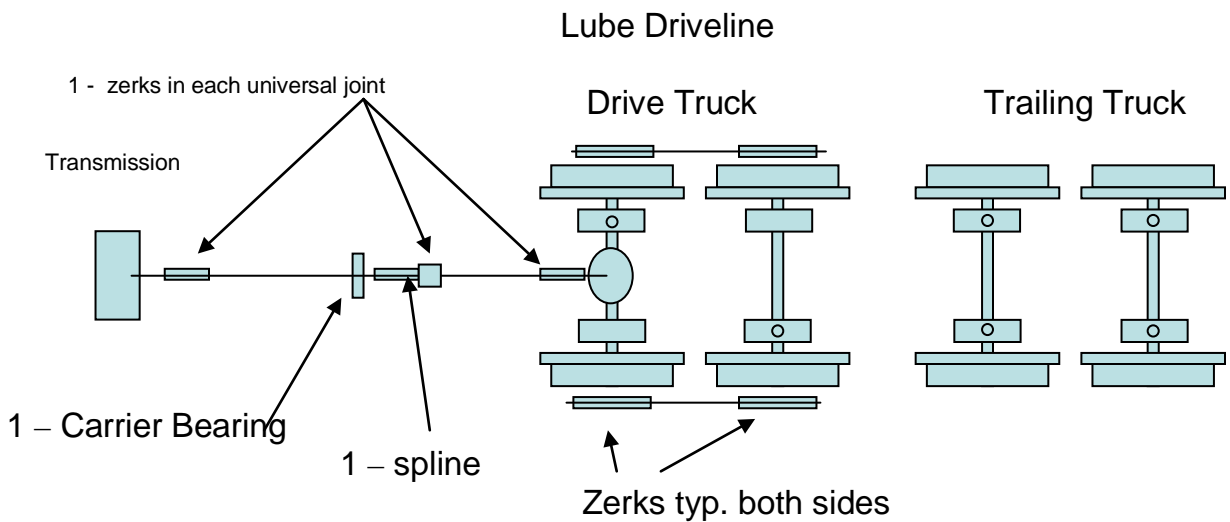


Zerk Fittings – On Upper and Lower trays

Grease Upper and Lower pans using (zerk fittings - future).
 King Pin and "Pan" lube. "5th wheel arrangement" Lubed by jacking up every few years.
 (See pictures below.)



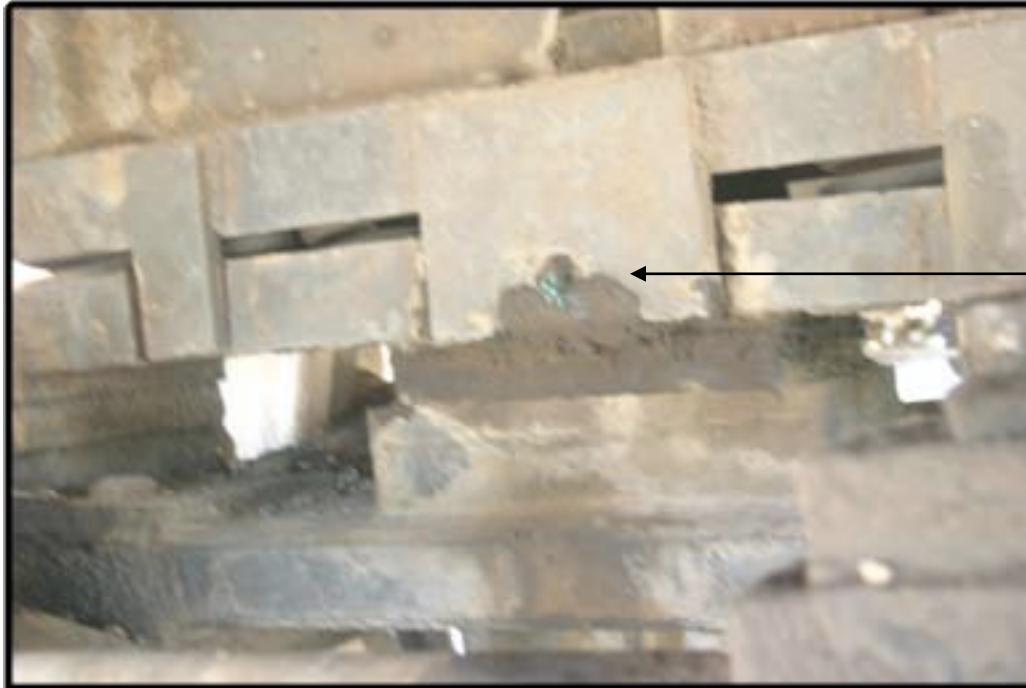
There are zerks on drive truck near the hubs at sprockets.
Also check for zerks under brake actuator shafts. (Best seen from underneath.)
(rev. 12-2017)



See following pictures:

Lew's Pictures:

Illustrates lube points from the Operator and Crew orientation session June 2014.



**Zerk fitting on Rear Truck Pivot (Look for 3 zerks)
Similar Zerks on Front Truck Pivot (No picture)**



Zerk Fitting on Power Truck (Look for 2 - Front and back of truck)

**Hand Brake
Cable Linkage.**



Brake Cable Shieve



Hand Brake Cable with air can behind.

**Topside
Pictures:**

**Engine,
Left Side**

**Left and Right
Fuel tank
valves
mounted on
inside of
frame**



**Engine,
Right Side**

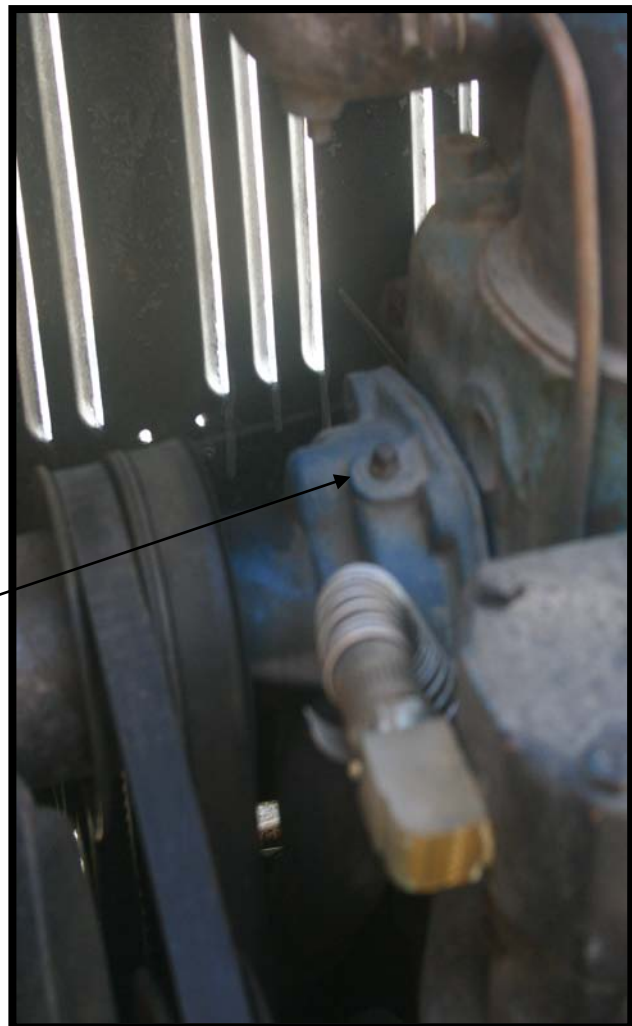


**Fan, water pump,
pulley**



Fan, Water pump, pulleys

**Note: water pump has
as plug which
must be removed
to lubricate
before excursion
Season**

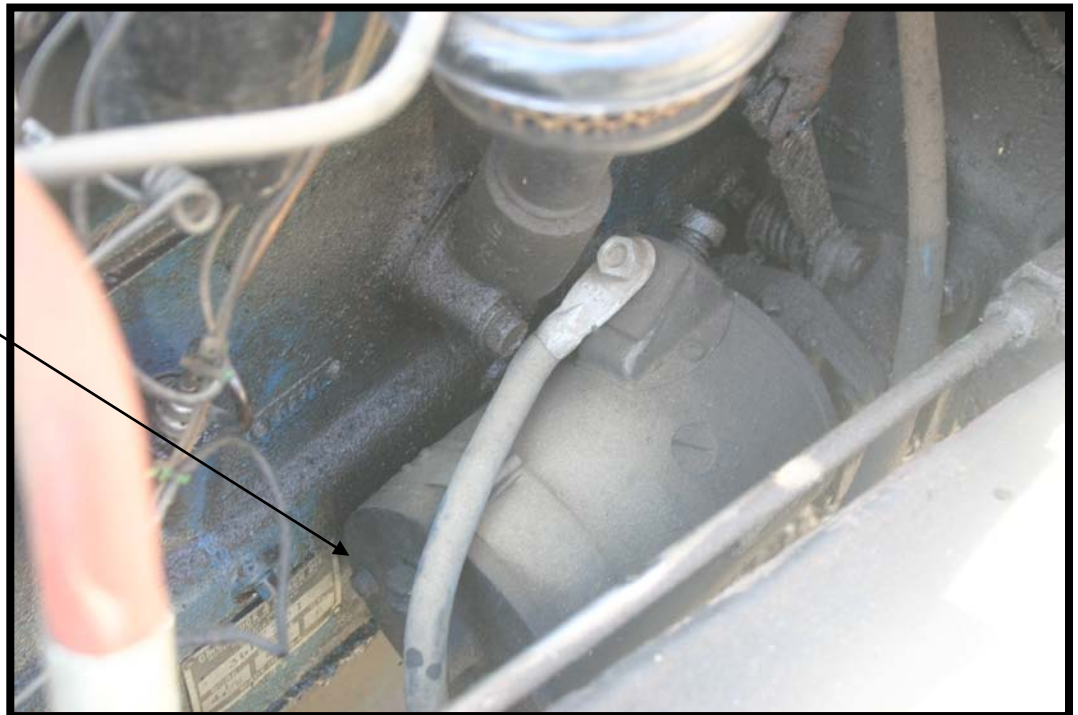


**Generator,
two oil cups.**



**Starter with
two oil cups
visible,
One
inaccessible
on the back.**

**(To oil the one
on the back,
remove starter
before the
excursion
season)**



**Look for zerks in each
universal joint.**

**(Zerks are also found on exterior of hubs
of drive truck sprockets.**

**Zerks found on both ends of the brake actuator shafts
on the power truck and trailing truck.**

Flanger lever by Motorman's left foot.

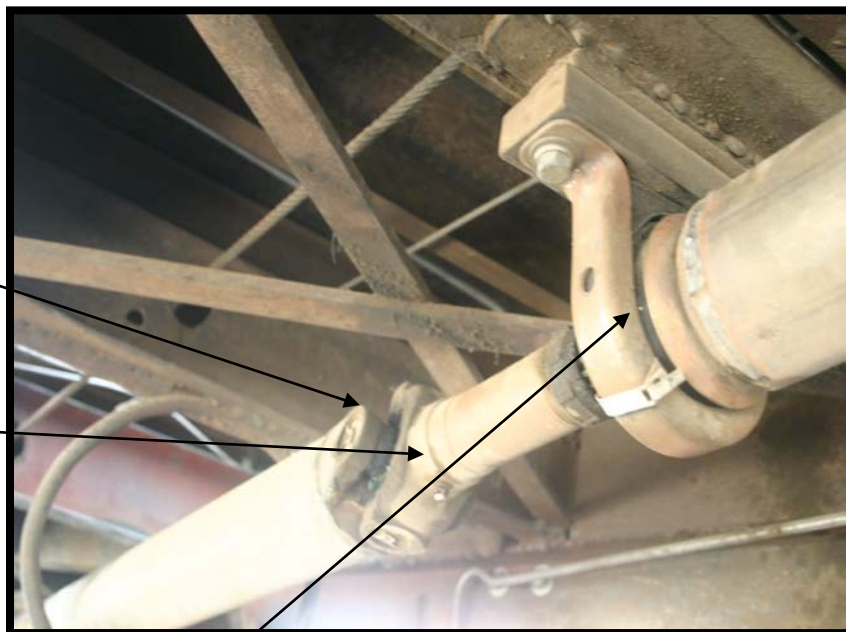
Clutch linkage

**Keep your eyes open for new locations
each time you get underneath.**

Perhaps a spot of bright paint would be helpful.)

**look for zerks here
- in universal joint**

Spline



Drive shaft with spline, and carrier bearing

Distributor



(The alligator clip on the wire in the middle of the picture is the positive wire on the back-up electric fuel pump. In the picture the clip is "parked" on the wire prior to use. If the electric fuel pump is needed, the clip will be connected to the positive terminal of the coil. The fuel lines will be repositioned to the input/output of the electric pump.)

**Diagrams by Joe Beringer
Photos by Lew Matis**